

Product Facts

Active Ingredients per 1 Scoop (0.54 g):

Organic Japanese Knotweed (<i>Polygonum cuspidatum</i>) Root	75 mg
Providing 25 mg of Resveratrol	
Organic Milk Thistle Seed Extract	35 mg
Organic Chlorella (<i>Chlorella vulgaris</i>) ..	25 mg
Curcumin Phytosome Complex [Turmeric (<i>Curcuma longa</i>) Rhizome Extract, Sunflower Lecithin].....	25 mg
Organic Dandelion (<i>Taraxacum mongolicum</i>) Leaf	25 mg
Glycine	25 mg
N-Acetyl L-Cysteine (NAC)	25 mg

Product Facts (continued)

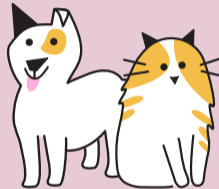
Phosphatidylcholine (from Sunflower Lecithin).....	25 mg
Superoxide Dismutase (SOD)	25 mg
Taurine	25 mg
Organic Schisandra Fruit Extract..	15 mg
Organic Green Tea Leaf Extract....	10 mg
L-Glutathione.....	10 mg

Inactive Ingredients: Microcrystalline Cellulose, Organic Rice Hull.

Cautions: If animal's condition worsens or does not improve, stop product administration and consult your veterinarian. Safe use in pregnant animals or animals intended for breeding has not been proven. May be a gastrointestinal irritant. Administer during or after the animal has eaten to reduce incidence of gastrointestinal upset. Do not use in high doses with anticoagulant drugs or in patients with stomach ulcers.

bark&whiskers™

promotes
healthy liver
&
kidney
function



DETOX SUPPORT

VETERINARIAN FORMULATED

FOR DOGS & CATS | NET CONTENTS 1.8 OZ. (52.3 g)

Product Facts (continued)

For use in dogs & cats only. Recommended to support normal liver and kidney detoxification.

Directions for Use: Administer orally, once per day.

Animal Type	Amount	Scoop(s)
Cats (2+ lbs.)	0.27 g	½
Toy Breed Dogs (up to 14 lbs.)	0.54 g	1
Small Breed Dogs (15-29 lbs.)	0.81 g	1½
Medium Breed Dogs (30-49 lbs.)	1.08 g	2
Large Breed Dogs (50-79 lbs.)	1.62 g	3
Giant Breed Dogs (80+ lbs.)	2.16 g	4

Warnings: Not for human consumption. Keep out of the reach of children and animals. In case of accidental overdose, contact a health professional immediately.

Questions? Distributed by: NHP, 125 SW 3rd Place
Cape Coral, FL 33991 USA (877) 985-2696

60085-v302



8 10487 03293 3