

DR. MERCOLA[®]

Fluoride Removal Full Spectrum
Countertop Water Filter

User Manual



CONTENTS

- 1. WATER FILTRATION SYSTEM 3
- 2. FEATURES 4
- 3. SPECIFICATIONS 5
- 4. PARTS 6
- 5. USAGE GUIDELINES AND PRECAUTIONS 8
- 6. INSTALLATION GUIDELINES 10
- 7. OPERATING INSTRUCTIONS 13
 - A. NORMAL OPERATION 13
 - B. USING THE DETACHABLE HOSE 13
 - C. CLEANING THE DRIP TRAY 14
- 8. EASY REPLACEMENT FILTER SYSTEM 15
- 9. REPLACING THE FILTER 16
 - A. REMOVING USED FILTER 16
 - B. INSTALLING AND REPLACING BATTERIES 16
 - C. RESETTING LED FILTER LIFE INDICATOR 17
 - D. INSERTING NEW FILTER 17
- 10. TROUBLESHOOTING 18
- 11. WARRANTY 19

WATER FILTRATION SYSTEM

Dr. Mercola's Fluoride Removal Full Spectrum Countertop Water Filter provides broad based contaminant removal. Independently tested against 172 contaminants, with a reduction up to 99.9% including fluoride! Includes a .01 micro hollow membrane filter which targets microbial contaminants such as bacteria, viruses, cysts and fungi.

❶ Sediment Shield

Removes larger particulate and sediment prolonging flow rate and filter life.

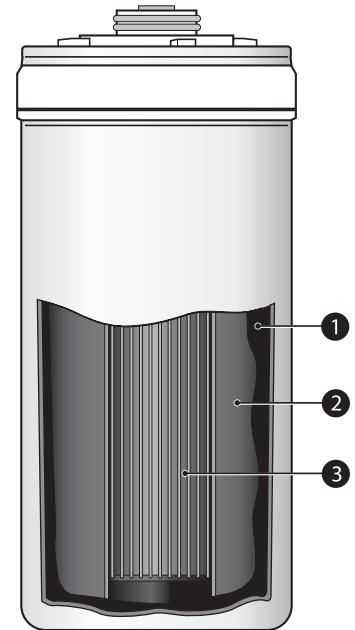
❷ .5 Micron Carbon Block

Reduces a wide range of contaminants up to 99.9% including:

- Heavy Metals such as arsenic and chromium
- Pesticides and herbicides
- Pharmaceuticals
- Fluoride and Chlorine

❸ .01 Micron Filtration

Reduces virtually all micro-organisms such as viruses, bacteria and fungi.



FEATURES

STYLISH COUNTERTOP DESIGN

Looks great on any countertop and alongside any kitchen sink. The stylish design allows for the Countertop Filter to fit into a variety of compact kitchen spaces.



EASY REPLACEMENT FILTER SYSTEM

Comes with the filter pre-installed.

Once the filter needs to be replaced, re-installation is easy.

The battery-powered LED indicator reminds you to replace the filter after 250 gallons.

Use Full Spectrum Countertop Water Filter replacement filters only.



BUTTON OPERATION

Fresh filtered drinking water readily available. Place a glass, water bottle or container on the drip-tray and press the button for instant filtered water. Press the button again to stop.



CONVENIENT DETACHABLE HOSE

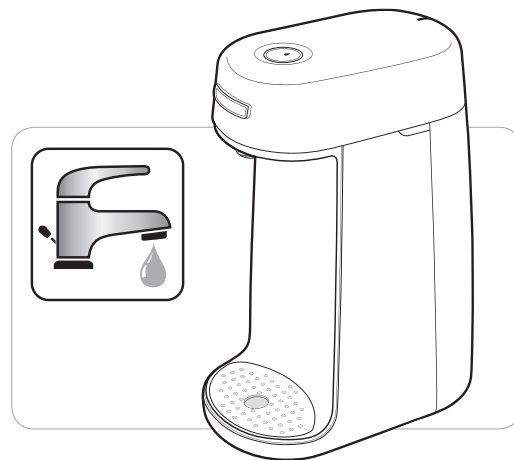
For added convenience, a detachable hose is included to fill large or heavy containers or pots.

SPECIFICATIONS

Model	Fluoride Removal Full Spectrum Countertop Water Filter
Weight	Unit: 4 lb (1.8 kg) Unit with Box: 5 lb (2.2 kg)
Dimensions (W x D x H)	Unit: 5.1" x 8.6" x 12.2" (130 mm x 220 mm x 310 mm) Box: 7" x 10.5" x 14" (177 mm x 267 mm x 355 mm)
Installation Type	Countertop with diverter
Nominal Water Pressure	14 psi (9,842.95 kgf/m ²)
Optimal Water Pressure	20 - 60 psi (14,061 - 42,184.09 kgf/m ²)
Temperature operating range	39°F - 95°F (4°C - 35°C)
Flow Rate	0.4 - 0.66 GPM (1.5 - 2.5 LPM) 2 LPM with typical water pressure (35 psi to 60 psi)
Filter Life and Method	250 gal (946 L) Change when LED filter life indicator blinks red Easy replacement filter one-touch lever method
Retains Essential Minerals	Calcium, Magnesium, Potassium

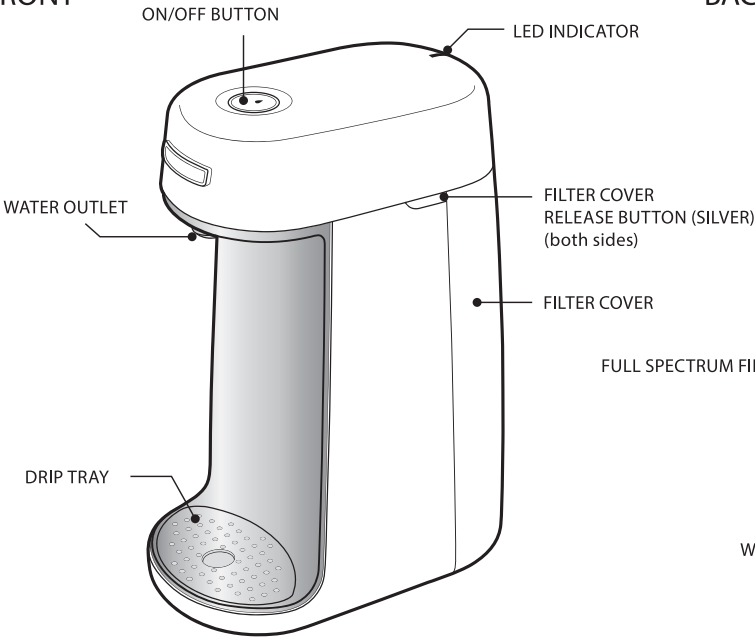
POTABLE WATER ONLY

The Full Spectrum Water Filter is intended for use with treated (potable) supply only.

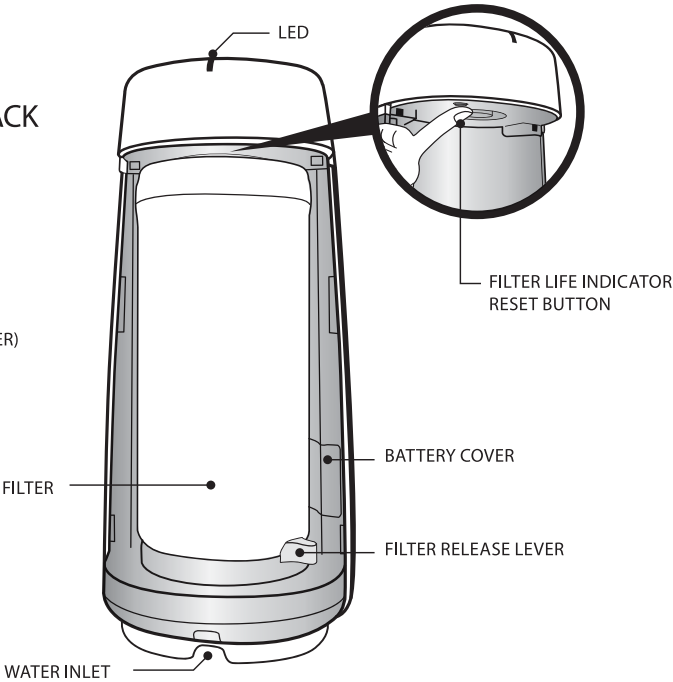


PARTS

FRONT



BACK



LED INDICATOR KEY

GREEN	In operation
RED	Replace filter. See Easy Replacement Filter System on page 15.

THE FOLLOWING PARTS ARE SHIPPED WITH YOUR NEW FULL SPECTRUM COUNTERTOP WATER FILTER



1 Water Filter Housing

2 Filter (installed)

3 AA Batteries (2)

4 User Manual

5 4.9 ft / 1.5 m White Inlet Hose (1)

6 Diverter Valve with Accessories (1)

7 Detachable Hose (1)

USAGE GUIDELINES AND PRECAUTIONS

WELCOME

We are interested in your safety while using Dr. Mercola's Full Spectrum Countertop Water Filter. We have included these general safeguards; please take the time to carefully read them. They provide important information regarding safe use and general maintenance of the appliance. Nonobservance of these safeguards may compromise the safety of the appliance, result in injury, and/or void the warranty.

IMPORTANT SAFEGUARDS

READ AND SAVE THESE INSTRUCTIONS

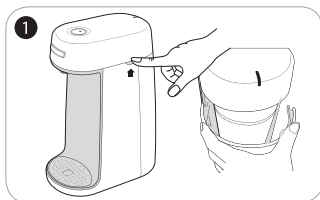
1. Keep this Owner's Manual safe for future reference.
2. To protect against risk of electrical shock due to batteries, do not submerge the appliance in water or other liquid. If appliance falls into water or liquid, do not reach into the water or liquid.
3. To avoid accidental injury, close supervision is necessary when appliance is used by or near children.
4. Do not operate appliance with visible damage to hose, after appliance malfunctions, or after the appliance has been dropped or damaged in any way.
5. The use of attachments not recommended or sold by Mercola may cause a fire, electrical shock, or injury.
6. Full Spectrum Countertop Water Filter is designed for household use only. Do not use outdoors.
7. Only connect to a treated water supply (potable water).
8. For optimum filtration, connect to a water supply with normal household water pressure.
9. Install away from sources of extreme heat to prevent deformation of housing.
10. It is recommended to install the unit away from excessive direct sunlight.
11. Do NOT use with hot water. Connect to a cold water supply only and install in an environment ranging between 39°F and 95°F only.
12. Do not attempt to clean the used filter as this may cause water to be re-contaminated during continued use.
13. Only install on countertop using a diverter valve, as directed in this manual. To operate, follow only the instructions referenced in this manual.
14. Do not expose to force or shock. Do not place objects on top of the unit.
15. Avoid spilling or splashing water over the unit or submerging in water.
16. Do not open back cover or interfere with filter during operation.
17. To clean, wipe surfaces regularly with a damp cloth. Do not use harsh cleaners, bleach or benzene-based solvents.

IMPORTANT SAFEGUARDS

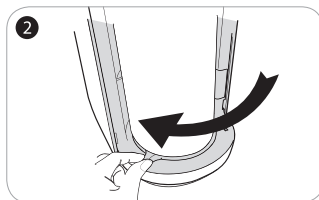
18. Do not let visible hose or diverter hang over edge of table or counter, or touch hot surfaces.
19. Do not place on or near a hot gas or electric burner, or in a heated oven.
20. If you plan on not using your Full Spectrum Countertop Water Filter for an extended period of time (more than 3 weeks), remove the filter, let it drain, and then store it in a plastic bag in your refrigerator.
21. Never move the appliance when it is operating.
22. Follow the cleaning instructions in this manual.
23. STORE OUT OF THE REACH OF CHILDREN.
24. Do not use the Full Spectrum Countertop Water Filter for other than the intended use.
25. After unpacking the appliance, check unit to be sure that it has been received undamaged and that no parts are missing. If you are in any doubt, contact Mercola Customer Service at (877) 985-2696.
26. Before connecting to water line, check that the water supply and connection are compatible and safe. It is the customer's responsibility to ensure the unit is compatible with plumbing.
27. Household installation must be carried out in accordance with manufacturer's instructions. Mercola is not responsible for any damage or injuries to persons, animals or objects caused by incorrect use or installation including but not limited to water damage due to leakage.
28. To disconnect or dismantle, turn any control to "off", shut off water supply, and then begin to dismantle.

INSTALLATION GUIDELINES

STEP 1 - REMOVE FILTER



Simultaneously push both silver Filter Cover Release buttons, located on both sides of the unit, to release cover.

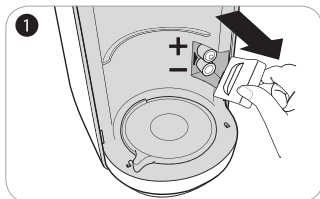


Slide the Filter Release Lever to the left or clockwise to unlock the filter.

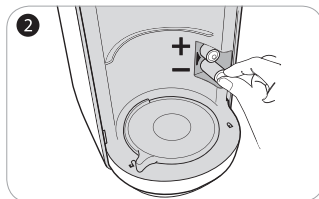


To remove, gently pull down the filter and slide towards you. When removing the filter, make sure you keep the filter in a vertical position to prevent spilling.

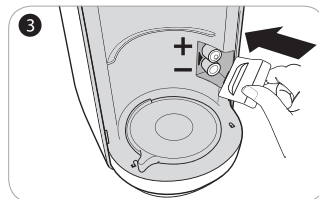
STEP 2 - INSTALL BATTERIES



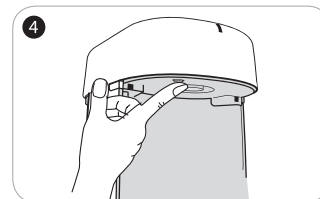
Slide open battery cover as shown.



Insert two (2) AA batteries (included).

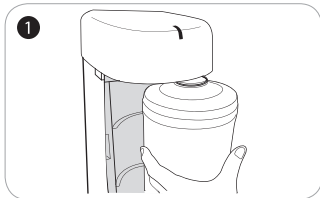


Close battery cover. The LED indicator will turn on.

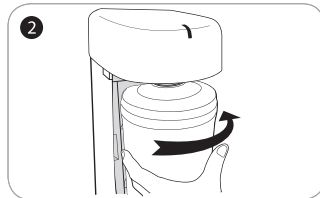


Press and hold the Filter Lifetime Reset button for 5 seconds. The LED indicator will blink when filter is reset.

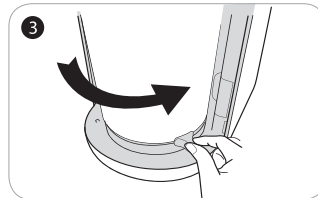
STEP 3 - RE-SECURE FILTER



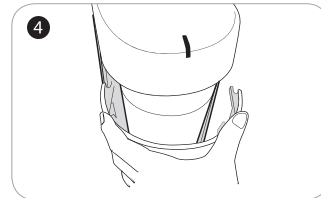
Return the filter to its original position inside the unit.



Gently turn the filter counter-clockwise until it fits into place.



Slide the Filter Release Lever across in a counter-clockwise direction to lock the filter into position. If the lever does not move easily, stop and gently adjust the filter to ensure it is correctly positioned.



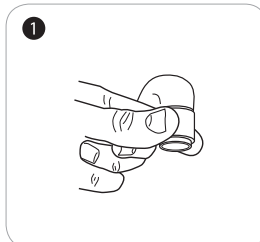
Re-install Filter Cover.

STEP 4 - CONNECT TO WATER SUPPLY

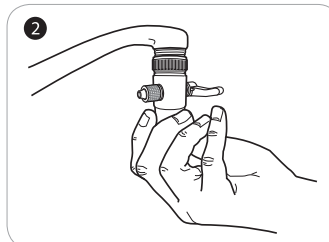
CONNECT DIVERTER TO FAUCET

STOP!

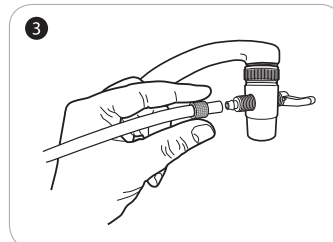
Does your faucet have a pull down sprayer? The Full Spectrum Countertop Water Filter *is not compatible* with this type of faucet. Please call Mercola Customer Service at (877) 985-2696 and one of our team members will work with you to determine the best solution for water filtration in your home.



Remove faucet aerator.

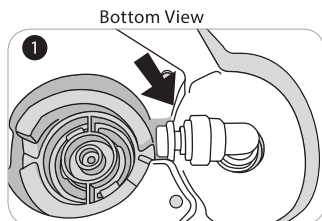


Connect the diverter valve to your faucet.



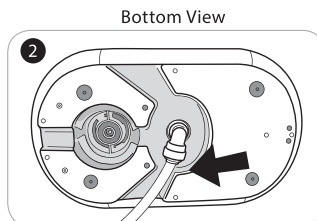
Then, unscrew and remove the small compression nut from the diverter valve. Slide the nut over one end of the white inlet hose. Make sure the threads are positioned so it will screw onto the diverter. Push the hose firmly onto the nipple, then screw the compression nut back on.

STEP 5 - CONNECTING TO QUICK CONNECT FITTING



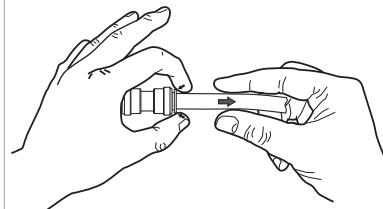
Remove the plug from the Quick Connect Inlet Fitting on the bottom of the unit by pressing the collet at the opening of fitting while pulling the plug out.

Arrow indicates the Quick Connect Fitting.



Connect the other end of the white inlet hose to the inlet fitting making sure hose is inserted all the way in. Gently tug on hose to assure proper connection.

REMOVAL

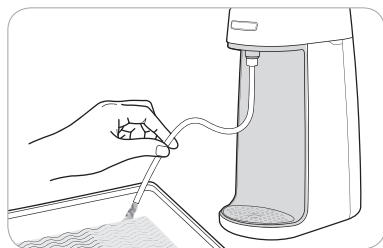


Hold Quick Connect Fitting end with thumb and index finger.

Press in on the collet ring while pulling out the 1/4" tubing in opposite direction.

STEP 6 - FLUSHING THE COUNTERTOP WATER FILTER

Water may be cloudy from carbon dust when a new filter is installed or when filter has not been used for more than a few days. This is normal and harmless. Be sure to sufficiently flush your new filter before filtering water to drink by doing the following:



- 1 Securely connect detachable hose to water outlet and place the other end in the sink or a bucket.
- 2 Push the ON/OFF button to run water through the unit for 3-5 minutes or until water runs clear.
- 3 Then, push the ON/OFF button again to stop.
- 4 Remove, drain and store detachable hose in a clean dry place for future use.

Your Full Spectrum Water Filter is now ready and at your service to provide great tasting, healthy, and clean drinking water on demand.

OPERATING INSTRUCTIONS

NORMAL OPERATION

- 1 Place glass, water bottle or container on the drip tray and press the ON/OFF button to start the flow of water. LED indicator turns GREEN during operation.
- 2 Press ON/OFF button again to stop the flow of water*.

NOTE: This unit uses a regulated flow rate for optimum filtration capabilities. These capabilities include the timing system used to keep track of the filter's usage and life expectancy.

*Failure to press the ON/OFF button after use will cause the Filter Life Indicator to lose track of the amount of water that has passed through filtration.



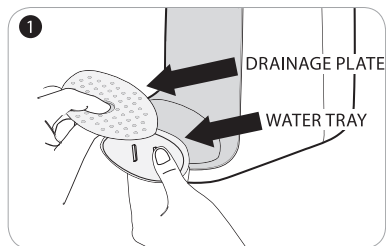
USING THE DETACHABLE HOSE

For filling large containers or flushing a new replacement filter only.

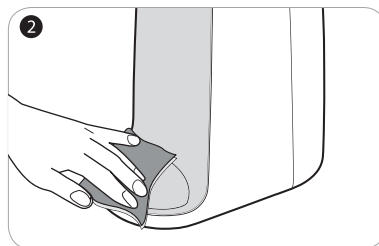
- 1 Securely connect hose to outlet by sliding the larger end of the hose over the water outlet. Ensure hose is securely attached to outlet to prevent leaks or spills.
- 2 Place other end of hose into pot or storage container.
- 3 Press ON/OFF button to start flow of water.
- 4 Press ON/OFF button again to stop the flow of water.
- 5 To remove hose, simply pull, don't twist.



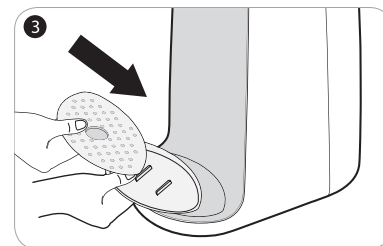
CLEANING THE DRIP TRAY



Remove drainage plate and water tray.



Wash gently with warm soapy water and dry.

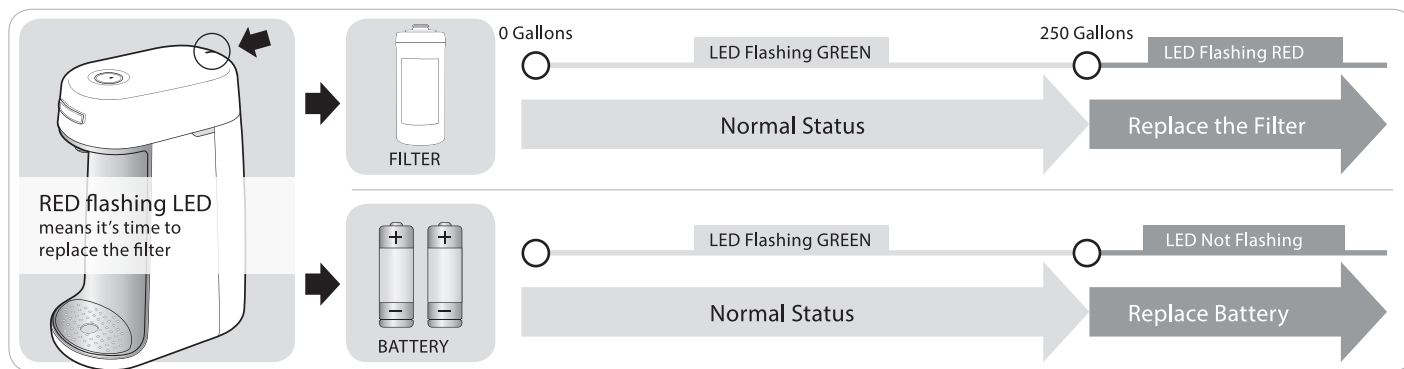


Re-install water tray and then cover with drainage plate.

EASY REPLACEMENT FILTER SYSTEM

When it is time to change the water filter, use Full Spectrum Countertop Water Filter replacement filters only. Do not try to clean or reuse expired filters. This will cause filtered water to become re-contaminated with harmful bacteria. To place an order for Full Spectrum Water Filter replacement filters, please visit www.shop.mercola.com or contact Mercola Customer Service at (877) 985-2696.

LED FILTER LIFE INDICATOR

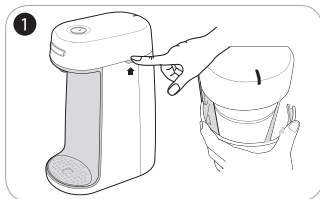


IMPORTANT:

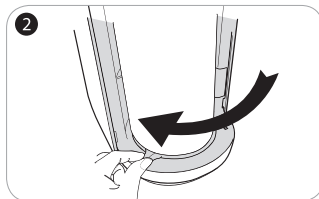
- It is a good idea to change the batteries when you replace the filter.
- LED flashing GREEN: Normal operation.
- LED flashing RED: Change the filter.
- LED not flashing: Change the battery. For detailed instructions for replacing batteries see page 16.

REPLACING THE FILTER

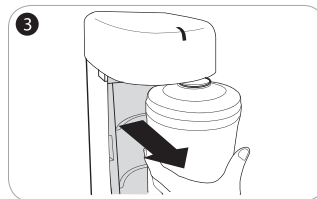
REMOVING EXPIRED FILTER



Simultaneously push both silver Filter Cover Release buttons, located on both sides of the unit, to release cover.



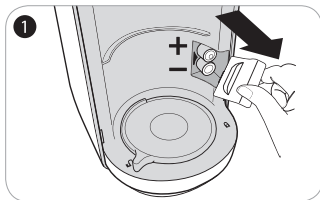
Slide the Filter Release Lever to the left or clockwise to unlock the filter.



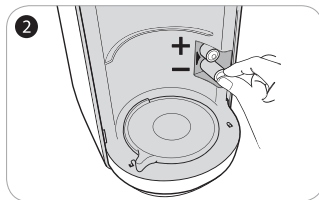
Gently pull down the filter and slide towards you to remove the filter. Make sure you keep filter in a vertical position to prevent spilling.

INSTALLING AND REPLACING BATTERIES

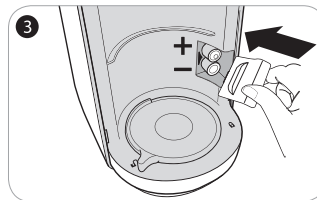
The battery-powered LED indicator reminds you to replace the filter after 250 gallons. To ensure it works correctly, the batteries should be replaced at the same time as the filter. The lifetime of the supplied AA Batteries is approximately 1 year. If the LED Indicator does not turn on during operation, it's time to change the batteries.



After detaching back cover and removing filter, slide open battery cover as shown.



Remove old batteries and insert two (2) new AA batteries.

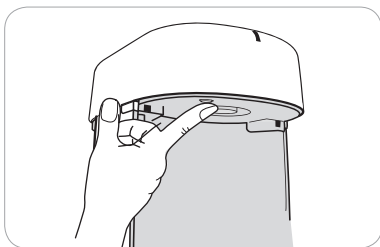


Close battery cover, then return the filter and back cover securely into position. The LED indicator will turn on.

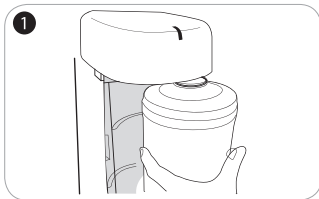
NOTE: If you are changing the batteries and NOT the filter, DO NOT PRESS the Filter Life Reset button.

RESETTING LED FILTER LIFE INDICATOR

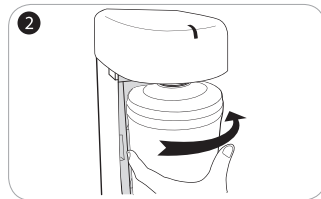
Press and hold the Filter Lifetime Reset button for 5 seconds to tell the unit that the filter is replaced. The LED indicator will blink to acknowledge.



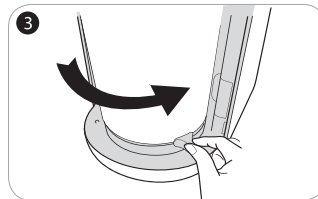
INSERTING NEW FILTER



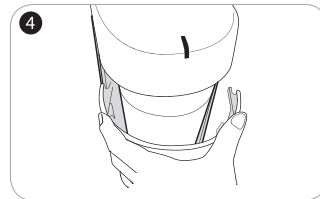
Place the new filter in the unit.



Gently slide the filter into position at the top by gently turning the filter counter-clockwise until it fits into place. Ensure the filter nozzle is securely fit into the housing.



Slide the Filter Release Lever across in a counter-clockwise direction to lock the filter into position. If the lever does not move easily, stop and gently adjust the filter to ensure it is correctly positioned.



Re-install Filter Cover. Always flush your filter after installation.

See Flushing the Countertop Water Filter instruction on page 12.

TROUBLESHOOTING

PROBLEM	POSSIBLE CAUSE	SOLUTION
Black colored dust in the water	A new filter may release some carbon dust into the water after installation.	Flush the filter as directed on page 12. This will clear loose granulated carbon from the filter.
	If the filter has been sitting unused for multiple days at a time, the filter may release some carbon dust into the water when it is first used again.	Flush the filter as directed on page 12. This will clear loose granulated carbon from the filter. If the filter continues to release dust after flushing, replace the filter.
Slow water flow	Filter is blocked.	Replace filter.
	Filter has reached its capacity.	Replace filter.
Noise in the system	There are air bubbles in the system.	Ensure all hoses are straight and without any kinks. Flush the filter as directed on page 12.
Unusual taste, smell of chlorine or other unpleasant odor	If not used for some time, water inside the unit may develop an unpleasant odor.	Ensure inlet valve is open and flush for 5 minutes.
	Filter has reached its capacity and filtration is compromised.	Replace filter.
Water leak	Water is not turned off at sink.	It is recommended to turn the water off from the faucet before pressing the "off" button on the Water Filter. Otherwise, water will continue to drip from the filter for a short period of time after the "off" button has been pushed.
	Tubes or fittings not properly connected.	Check all connections.
No water flow	The diverter or in-line shut off valve is closed.	Open the diverter valve.
	The ON/OFF button is off.	Push the ON/OFF button.
LED Indicator is not working	Batteries have died.	Change the batteries.
	Water has damaged the LED Indicator's electronics as a result of improper use.	Contact Mercola Customer Service.
White substance suspended in filtered water	Tiny bubbles can appear to make the water cloudy.	Allow the water to sit a few minutes and check again.
After boiling or thawing frozen water, white sediment is observed	Hard water caused by high mineral content water.	If no change in taste, likely cause is minerals affected by changing temperatures. Dr. Mercola's Fluoride Removal Full Spectrum Countertop Water Filter does not remove trace minerals in the water.

WARRANTY

ONE-YEAR LIMITED WARRANTY

Your Fluoride Removal Full Spectrum Countertop Water Filter is warranted to be free from all defects in material and workmanship in normal household use for a period of 1 year from date of purchase. The warranty is granted only to the original purchaser. The warranty is subject to the following provisions. This warranty does not cover normal wear and tear. Any damages or malfunctions caused by negligence, abuse, improper use, improper installation, or use not in accordance with the Owner's Manual are not covered by this warranty. This warranty does not cover damage due to leakage or water damage.

If the unit is dropped, damaged, or immersed in liquids, these are not covered by this warranty. Likewise, any defects or damages caused by unauthorized service are not covered. Using this unit for commercial purposes voids this warranty. Natural Health Partners, LLC will, at its option, repair or replace the part which proves to be defective free of charge (excluding shipping if applicable) that is covered by this warranty. As a matter of warranty policy, Natural Health Partners, LLC will not refund the customer's purchase price. To obtain warranty service you must return the defective Countertop Water Filter along with proof of purchase to Natural Health Partners, LLC. All delivery charges on parts, or units, submitted under this warranty shall be borne by purchaser. Unless this Warranty is expressly renewed or extended by Natural Health Partners, LLC, any repaired or replaced part of unit shall be warranted to the original purchaser only for the length of the unexpired portion of the original warranty.

FURTHER LIMITATIONS AND EXCLUSIONS ARE AS FOLLOWS:

Any warranty that may be implied in connection with your purchase or use of the Fluoride Removal Full Spectrum Countertop Water Filter, including any warranty of merchantability is limited to the duration of this warranty. Some states do not allow limitations on how long an implied warranty lasts, so the above limitations may not apply to you. Your relief for the breach of this warranty is limited to the relief expressly provided above. In no event shall Natural Health Partners, LLC be liable for any consequential or incidental damages you may incur in connection with your purchase or use of the Full Spectrum Countertop Water Filter. Some states do not allow the exclusion or limitation of incidental or consequential damages, so the above limitation or exclusion may not apply to you. This warranty gives you specific legal rights, and you may also have other rights which vary from state to state.

DR. MERCOLA[®]

Fluoride Removal Full Spectrum
Countertop Water Filter

DISTRIBUTED BY: NHP, 125 SW 3rd Place
Cape Coral, FL 33991 USA (877) 985-2696
Made in South Korea 20305/20307-v102