



*Revitalize. Refresh.
Invigorate. Purify.*

Diffuser Dimensions: 5" x 5" x 7.3" (130mm x 130mm x 185mm)

Effective Area: 82 sq. ft. (25 m²)

Water Capacity: 110mL/3.7 FL. OZ. maximum fill

Timer Function: 60/120/180 minutes

Power Source: AC Adapter (included)

DISTRIBUTED BY: NHP
125 SW 3rd Place, Cape Coral, FL 33991 USA
(877) 985-2696

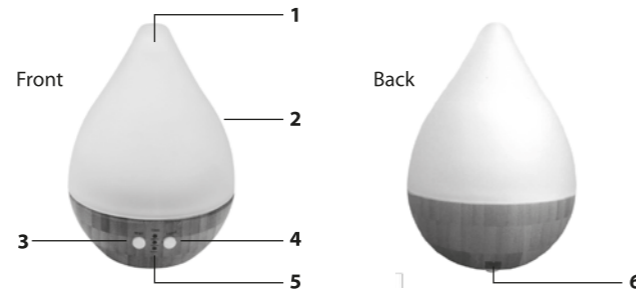
Made in China v100NB

DR. MERCOLA®
HEALTHY HOME

ultrasonic aroma diffuser

Before using this product, please read this manual thoroughly,
and keep on hand for future reference.

PRODUCT DETAILS



1. Aromatic Mist Outlet
2. Ceramic Cover
3. Mist Button
4. Light Button
5. LED Time Indicators
6. Power Plug

FILLING INSTRUCTIONS

1. Remove the ceramic cover.



2. Remove the water tank cover.



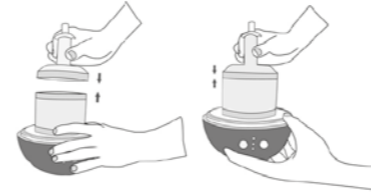
3. Fill the tank with water up to the MAX level line (110mL/3.7 FL. OZ.). Use filtered or bottled water, at a temperature between 50°F & 100°F (10° & 38°C).



4. Add 5 to 10 drops of your favorite essential oil (preferably organic) to the filled water tank.



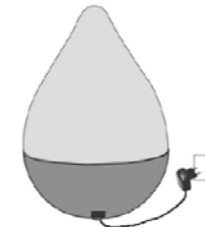
5. Replace and tighten the water tank cover.



6. Replace and secure the ceramic cover.



7. Plug the adapter into the diffuser DC plug. Then plug the adapter into a wall socket. Select your desired features for use and enjoy!



FEATURES AND FUNCTIONS

1. Press the Mist Button to switch ON the Aroma Diffuser.
 - 1st press (all indicator LEDs on): Continuous mode.
 - 2nd press (60 min LED on): Diffuser powers OFF after 60 minutes.
 - 3rd press (120 min LED on): Diffuser powers OFF after 120 minutes.
 - 4th press (180 min LED on): Diffuser powers OFF after 180 minutes.
 - 5th press: Mist function OFF.
2. The LED light blinks when the water level has run too low to produce mist. The diffuser will automatically stop after 5 minutes. You can add water and then press the Mist Button to restart the diffuser. Always turn the diffuser OFF before filling the water tank.
3. To stop the Aroma Diffuser: Press the Mist Button until all the LED lights are off.
4. To switch ON the ambient light: Press the Light Button. To switch OFF the ambient light: Press the Light Button again.

MAINTENANCE

1. Turn OFF the Aroma Diffuser and unplug when cleaning. Press the Mist Button until all the LED lights are off.
2. Drain and rinse the water tank thoroughly to remove any sediment and oil.
3. Using a soft clean cloth, thoroughly clean the inside of the tank. Use a swab to gently clean the surface of the disk area.
4. Always keep the Aroma Diffuser clean and dry when not in use. Never leave stagnant oil and water inside the Aroma Diffuser when not in use.

NOTES FOR USE:

Place the Aroma Diffuser on a stable surface that is smooth and even. Do not place on a surface that is susceptible to water damage. Always take care when removing the cover. Always switch OFF the Aroma Diffuser and light when removing the cover. Do not operate without water. Make sure the water tank is clean and free of foreign objects. The recommended room temperature is between 60°F and 85°F (16°C and 29°C), with a relative humidity between 40% and 60%.