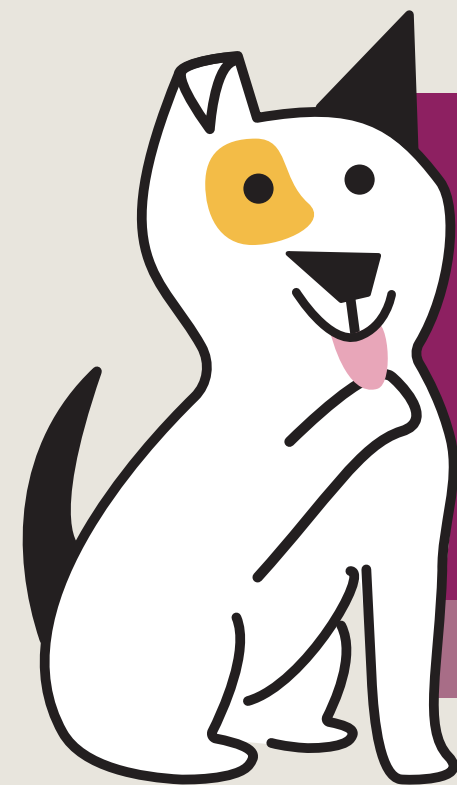


bark & whiskers™

grass fed | dehydrated



BEEF & VEGGIE ENTRÉE

for all life stages



VETERINARIAN FORMULATED

makes 12 LBS of food | just add water

FOOD FOR DOGS | NET WT. 3 LB. (1.36 KG)



beef



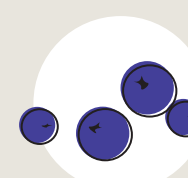
squash



spinach



beets



blueberries

Take the lead in your pup's health with our versatile, species-appropriate meal - or treat and topper. Made with love and wholesome ingredients, this tasty alternative to kibble has all the fixings that are carefully dehydrated for maximum nutrients - plus essential vitamins and minerals. Serve up only the best for your best friend with ingredients made to thrive.

PREPARATION INSTRUCTIONS:

1. **MIX** measured food with water.
2. **STIR** well, and wait 5 minutes for food to hydrate.
3. **SERVE** for the ultimate tail wags!

Use as a treat, tasty meal topper, or replace your dog's meals entirely. Either way, empty bowl guaranteed!

Premade food may be stored in a sealed container and placed in the refrigerator for up to four days.

makes 12 LBS of food

FEEDING TIP: If your dog is new to dehydrated food, transition slowly. Begin by replacing a small amount of their current food with Bark & Whiskers Beef & Veggie Entrée, and monitor. If they react well, continue replacing larger amounts of their original food with the dehydrated food throughout the week until you are feeding entirely dehydrated food.

FEEDING DIRECTIONS: Feed as a complete and balanced meal. Serving amount should be fed once per day or split into two daily portions. Each dog is different, and feeding amounts may vary based on many factors, including age, breed, activity level and environment. Please use the information below as a guide, observe your pet closely and adjust as needed.

DOG SIZE (WEIGHT)	DOG TYPE	SERVING AMOUNT (oz.)	DRY CUP(S)
Toy Breed Dogs (up to 14 lbs.)	Adult	0.9 oz. to 2 oz. per day	1/3 to 3/4
	Puppy	2 oz. to 3.9 oz. per day	3/4 to 1 1/2
Small Breed Dogs (15-29 lbs.)	Adult	2 oz. to 3.5 oz. per day	3/4 to 1 1/3
	Puppy	3.9 oz. to 6.5 oz. per day	1 1/2 to 2 1/2
Medium Breed Dogs (30-49 lbs.)	Adult	3.5 oz. to 5.2 oz. per day	1 1/3 to 2
	Puppy	6.5 oz. to 10.4 oz. per day	2 1/2 to 4
Large Breed Dogs (50-79 lbs.)	Adult	5.2 oz. to 8.2 oz. per day	2 to 3 1/8
	Puppy	10.4 oz. to 16.5 oz. per day	4 to 6 1/3
Giant Breed Dogs (80-150 lbs.)	Adult	8.2 oz. to 15 oz. per day	3 1/8 to 5 3/4
	Puppy	16.5 oz. to 30.4 oz. per day	6 1/3 to 11 2/3
Dogs over 150 lbs.		Add 1/3 cup (0.9 oz) per additional 10 lbs.	

For pregnant or lactating dogs, feed up to two to three times the amount listed for adult dogs. Always consult with your veterinarian before feeding your dog a new food, especially for pregnant or lactating dogs.

SUPPLEMENTAL FEEDING DIRECTIONS: Feed as a meal topper to be served on top of your dog's current food. Reduce the calorie amount of your dog's current food accordingly.

DOG SIZE (WEIGHT)	SERVING AMOUNT (oz.)	DRY CUP	CALORIES PER SERVING
Toy Breed Dogs (up to 14 lbs.)	0.33 oz. per day	1/8	46.1
Small Breed Dogs (15-29 lbs.)	0.65 oz. per day	1/4	90.8
Medium Breed Dogs (30-49 lbs.)	1.3 oz. per day	1/2	181.6
Large Breed Dogs (50-79 lbs.)	1.95 oz. per day	3/4	272.4
Giant Breed Dogs (80-150 lbs.)	2.6 oz. per day	1	363.2

Bark & Whiskers Beef & Veggie Entrée is formulated to meet the nutritional levels established by the AAFCO Dog Food Nutrient Profiles for All Life Stages, including growth of large size dogs (70 lb. or more as an adult).

Guaranteed Analysis	
Crude Protein (Min):	39%
Crude Fat (Min):	33%
Crude Fiber (Max):	4%
Moisture (Max):	6%

Distributed by: NHP, 125 SW 3rd Place
Cape Coral, FL 33991 USA (877) 985-2696

Calorie Content (Calculated):
4930 kcal ME/kg; 363 kcal ME/cup

INGREDIENTS: Beef, Beef Heart, Beef Bone, Beef Liver, Beef Kidney, Organic Butternut Squash, Organic Spinach, Organic Beets, Organic Blueberries, Safflower Oil, Organic Kelp, Inulin (Chicory), Sea Salt, Zinc Amino Acid Chelate, Vitamin E Supplement, Manganese Amino Acid Chelate, Cholecalciferol (source of Vitamin D).

